



AFP™_Leggero

CleanPrint for corrugated board.





Just Kiss. No Crush.

The Asahi super-soft AFP™-Leggero CleanPrint plates have been specifically designed for printing with a minimal Kiss touch pressure on corrugated transport boxes, delivering minimal washboarding and good ink coverage for the utmost in quality while eliminating board crush to better protect the packaged goods.



Superior Ink Coverage

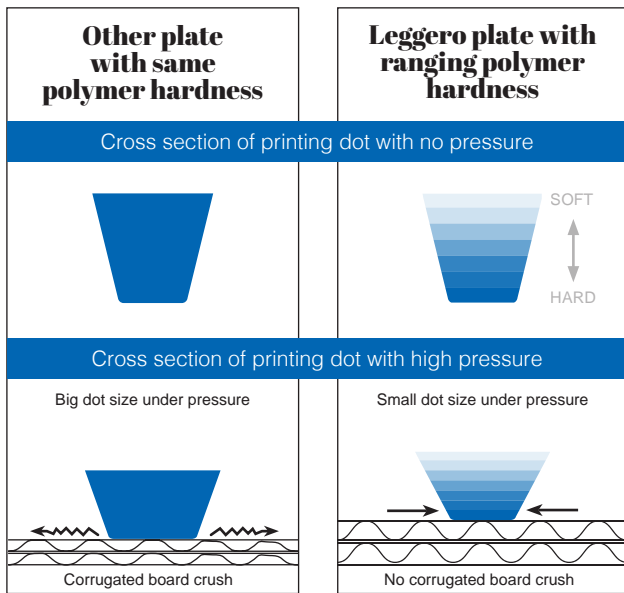
Ink coverage can be an issue in solid areas of colour with flexographic printing corrugated board. With Asahi AFP™-Leggero super-soft plates, worry no more! Achieve superior ink coverage for the best possible quality in direct-to-corrugated printing. This makes it much easier to achieve better print results with lower quality paper.



AFP™-Leggero



Other plate

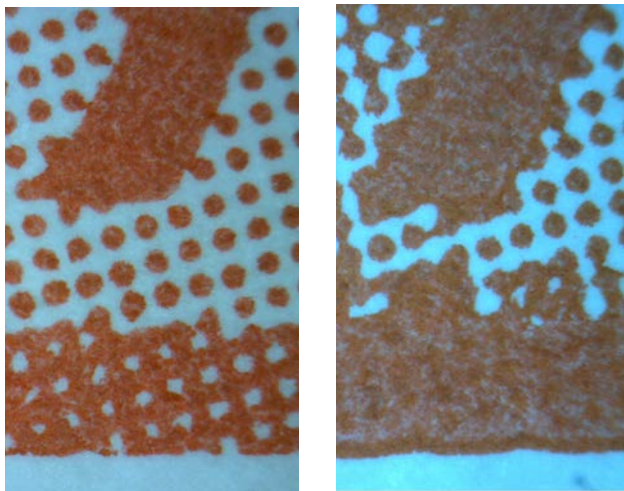
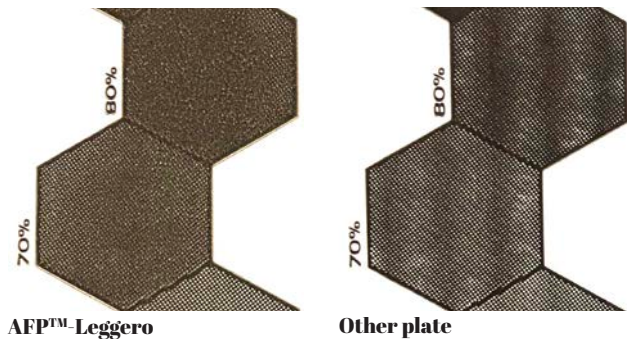


Unique Polymer Structure

The AFP™-Leggero plate has a unique polymer structure which is resulting into reduced flute marks (wash board) and does not crush the corrugated board.

Minimal Washboarding

Because AFP™-Leggero plates are super soft and smooth, they enable the ultimate in kiss-touch printing. This means that washboarding – a common quality problem with flexographic printing on corrugated board – is dramatically reduced.



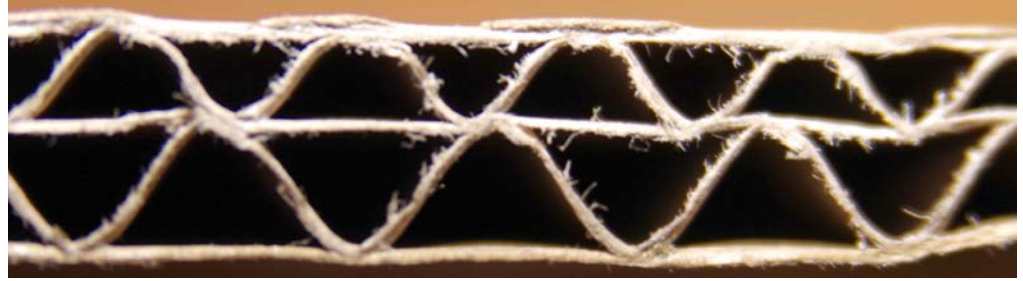
Improved Quality of Fine Lines and Small Text

Typical flexographic direct-to-corrugated printing applies too much pressure to the plate, creating dot bridging. This makes it nearly impossible to print high quality fine lines and small text. With Asahi AFP™-Leggero's soft kiss-touch printing, there is no dot bridging, resulting in crisp, clear images.

CleanPrint for More Sustainable Flexographic Printing

AFP™-Leggero flexographic plates feature Asahi's CleanPrint technology. CleanPrint flexographic plates from Asahi Photoproducts have been specifically developed by our chemical engineers to transfer all remaining ink to the printed substrate, reducing press stops for plate cleaning while delivering exceptional consistent quality throughout the entire run. This results in higher quality, less waste, and improvement in OEE!

**Contact
Asahi
Photoproducts
today to
learn more.**



Board Crush Test with 3,94mm Plate

	Leggero plate	Other plate
Plate durometer	25° Shore A	31° Shore A
Raw board measurement	3,01mm	3,01mm
Printed board measurement	3,01mm (ZERO CRUSH)	2,98mm (CRUSH)
Density	0,44	0,41

AFP™-Leggero Plate Specifications

Asahi AFP™-Leggero super-soft flexographic plates for post-print corrugated board. Plates with additional thicknesses should be confirmed with an Asahi representative.

Plate thickness	2,84mm	3,94mm	5,5mm
Shore A Hardness (Teclock)	28	25	24
Applications	Corrugated board / Lightweight corrugated board		
Ink recommendation	Water based inks / Solvent based inks		
Resolution digital	120lpi	120lpi	120lpi
Tonal range	2-95%	2-95%	2-95%
Isolated line	0,150	0,150	0,150
Isolated dot	0,200	0,200	0,200
K-factor	17,05	23,97	33,77
Plate color	Light blue to light green		
Plate bump-up at 120lpi	9%	9%	9%
Back flash	570mJ*	1400mJ*	1950mJ*
Relief depth	up to 1,2mm	up to 1,2mm	up to 1,6mm
Laser imaging	3,8 J/sqcm	3,8 J/sqcm	3,8 J/sqcm
Front exposure	6000mJ*	6000mJ*	6000mJ*
Wash-out speed/minute	110mm/min	110mm/min	90mm/min
UVA post exposure	1000mJ*	1000mJ*	1000mJ*
UVC light finishing (max)	1000mJ*	1000mJ*	1000mJ*

*mJ measurements are taken with OCR equipment. The mentioned plate making conditions are particular to the Asahi Photoproducts technical centre equipment and cannot be transferred. The values should be used with caution and understood to be a best practice start-up values for testing the plate making condition as explained in the Asahi Photoproducts training manual.

Asahi Photoproducts

Paepsem Business Park
Boulevard Paepsem 22
B-1070 Brussels, Belgium
Phone: +32 (0)2 526 05 30
info@asahi-photoproducts.com

Asahi Kasei Corporation

Photoproducts Division
1-1-2, Yurakucho, Chiyoda-ku,
Tokyo 100-0006, Japan
Phone: +81(3)6699-3353
info@asahi-photoproducts.com

Asahi Kasei Electronics Materials (Suzhou), Co. Ltd

Asahi Flexo Technical Center
261 Xinglong Street,
Suzhou Industrial Park
Jiangsu, 215021 China
Phone: +86-512-62836188-162
info@asahi-photoproducts.com